



MONTHLY MEMBERSHIP PROGRESS REPORT

Results as of: 12/31/2015

Multiple District 44

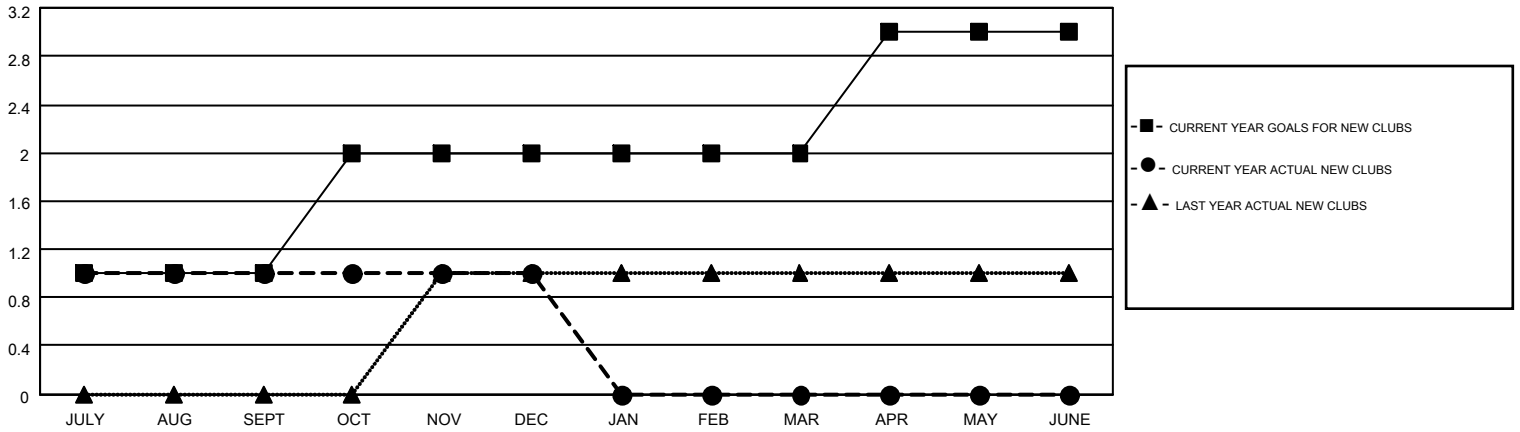
LOCATION: NEW HAMPSHIRE

GMT: ED LECIUS

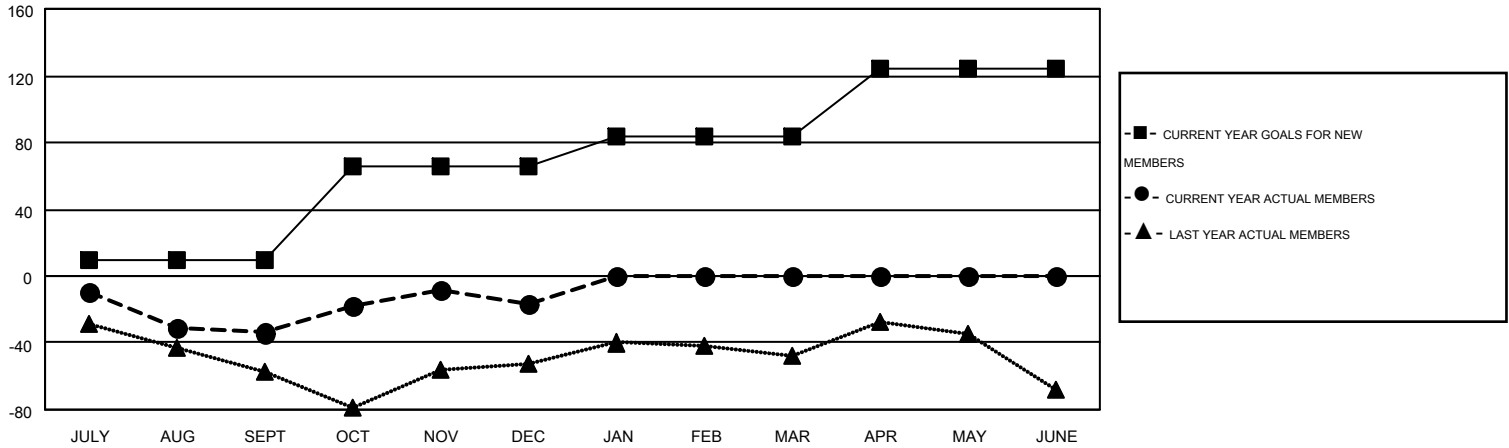
GMT CA 1

| Clubs | | | | | Members | | | | |
|-----------------------|---------------|-----------|---------------|---------------|-----------------------|-----------------|-------------------------------|-----------------|---------------|
| RESULTS FOR 2015-2016 | | | | | RESULTS FOR 2015-2016 | | | | |
| QUARTER | NEW CLUB GOAL | NEW CLUBS | DROPPED CLUBS | NET GAIN/LOSS | QUARTER | NEW MEMBER GOAL | CHARTER AND NEW MEMBERS ADDED | DROPPED MEMBERS | NET GAIN/LOSS |
| JULY/AUG/SEPT | 1 | 1 | 0 | 1 | JULY/AUG/SEPT | 10 | 70 | 104 | -34 |
| OCT/NOV/DEC | 1 | 0 | 2 | -2 | OCT/NOV/DEC | 56 | 82 | 65 | 17 |
| JAN/FEB/MAR | 0 | 0 | 0 | 0 | JAN/FEB/MAR | 18 | 0 | 0 | 0 |
| APR/MAY/JUNE | 1 | 0 | 0 | 0 | APR/MAY/JUNE | 40 | 0 | 0 | 0 |

GOALS AND ACTUAL NEW CLUBS CUMULATIVE



GOALS AND ACTUAL MEMBERS CUMULATIVE



| | | | |
|------------------------|---|----------------------------|----------------|
| DROPPED CLUBS: 2 | 34 CLUBS OF 80 ADDED 1 OR MORE NEW MEMBERS | <u>GENDER DISTRIBUTION</u> | |
| <u>DROPPED MEMBERS</u> | | MALE | 1,419 (62.43%) |
| DECEASED | CLICK HERE FOR HEALTH ASSESSMENT DATA | FEMALE | 854 (37.57%) |
| CLUB CANCELLED | | FAMILY UNIT MEMBERS | 626 |
| OTHER | | HEAD OF HOUSEHOLD | 307 |
| TOTAL | | NON-HEAD OF HOUSEHOLD | 319 |